



Lanarkshire ADAT
Drug Related Death Audit:
2002-2006

Mr David Speirs, Procurator Fiscal
Chair:

ADAT Critical Incident Sub-Group

Lanarkshire **ADAT**
ALCOHOL & DRUG ACTION TEAM

Lanarkshire DRD: CIG

The Lanarkshire ADAT Critical Incident Sub-Group (CIG) was convened in 2003 to pool and analyse information on drug-related deaths (DRDs) in order to identify risk factors and opportunities for intervention.



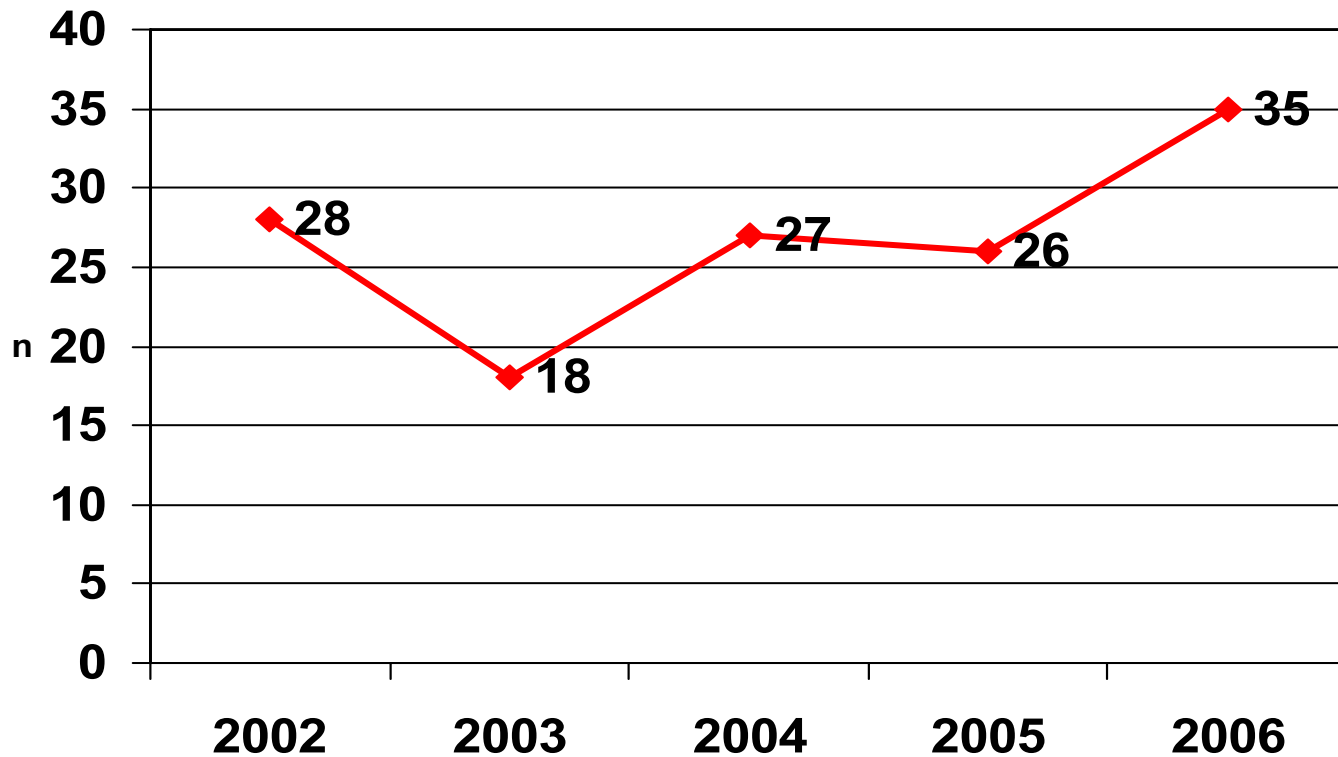
Lanarkshire DRD: Definition

- A drug related death is defined as *‘a death where there is prima facie evidence of a fatal overdose of controlled drugs. Such evidence would be recent drug misuse, for example controlled drugs or hypodermic syringes found in close proximity to the body, or the person is known to the police as a drug misuser, although not necessarily a notified addict’*[\[1\]](#).

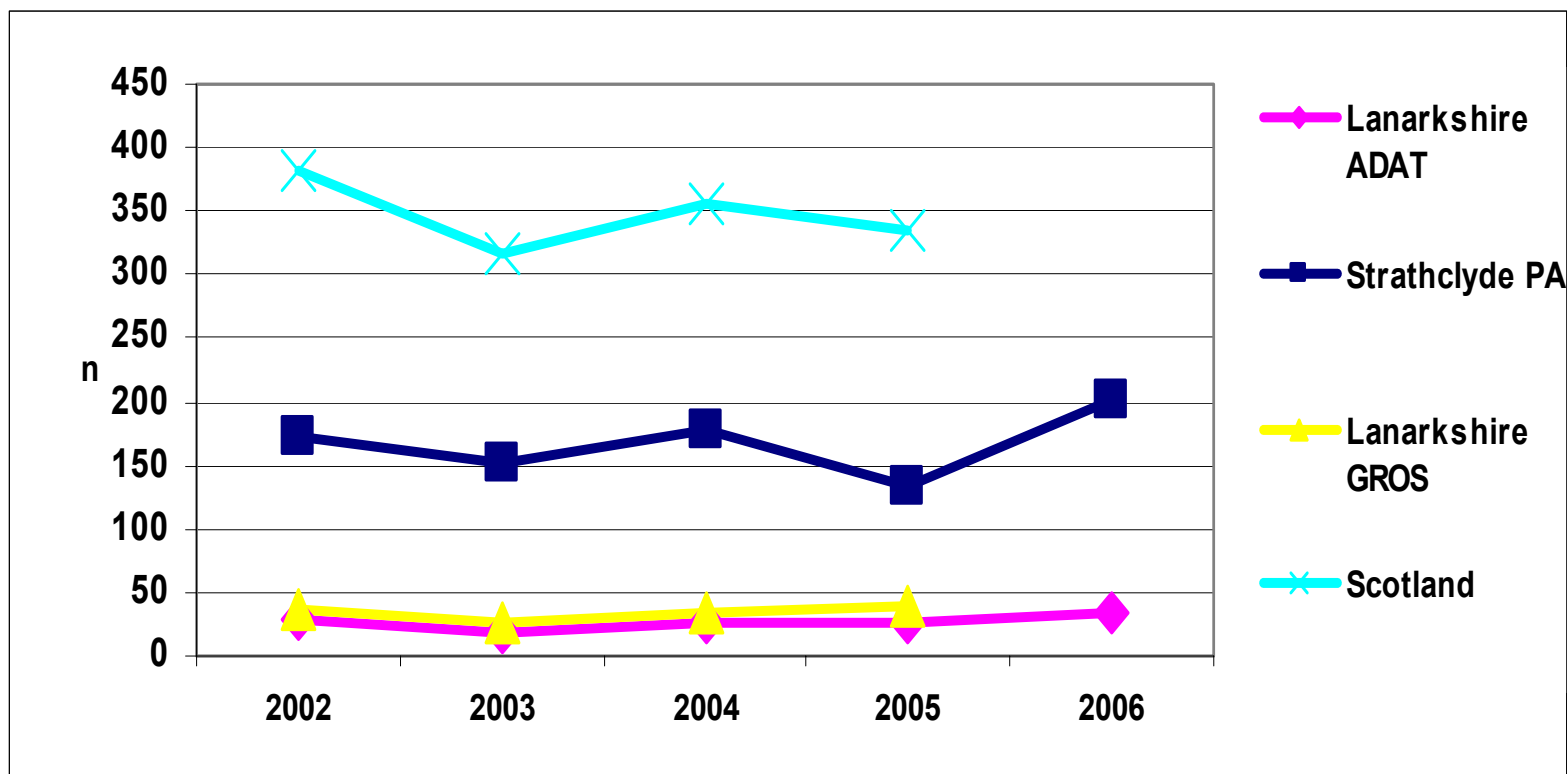
[\[1\]](#) Report of the Ministerial Task Force “Drugs in Scotland: Meeting the Challenge” (1994)



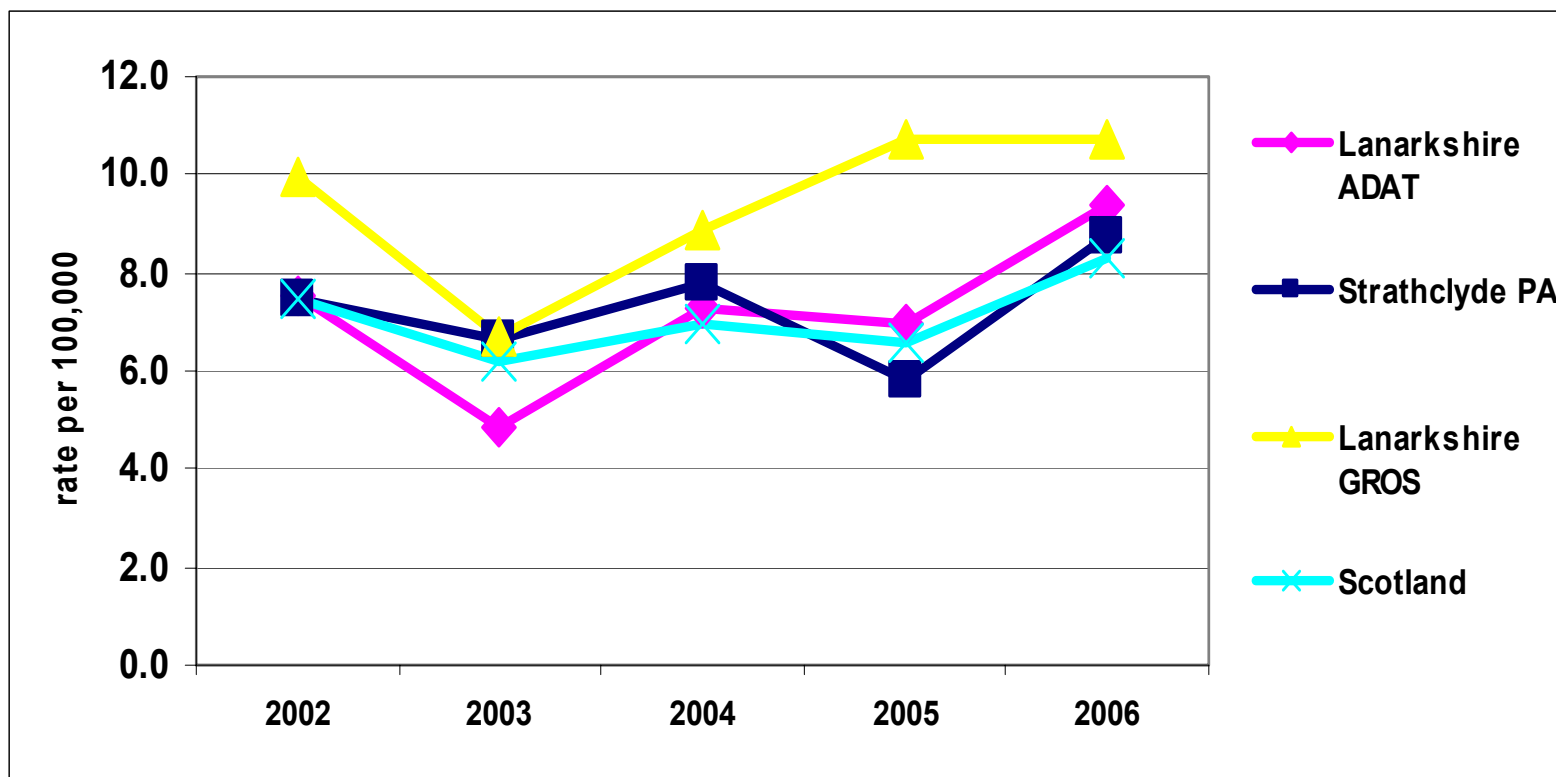
Lanarkshire DRD, 2002-2006



Lanarkshire DRD, 2002-2006



Lanarkshire DRD: Prevalence

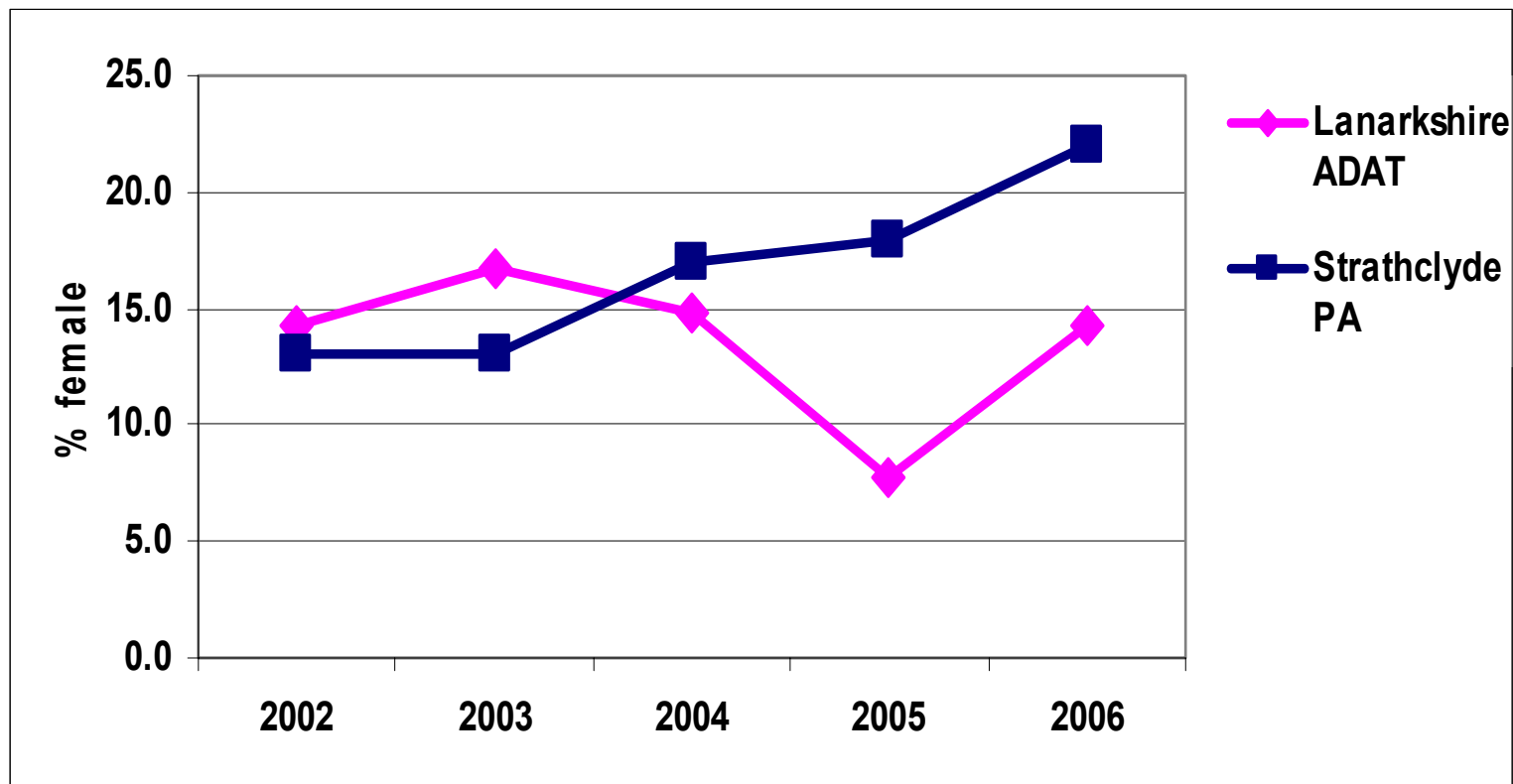


Lanarkshire population: 372,095

Strathclyde Police Area population: 2,300,000

Scotland population: 5,094,800

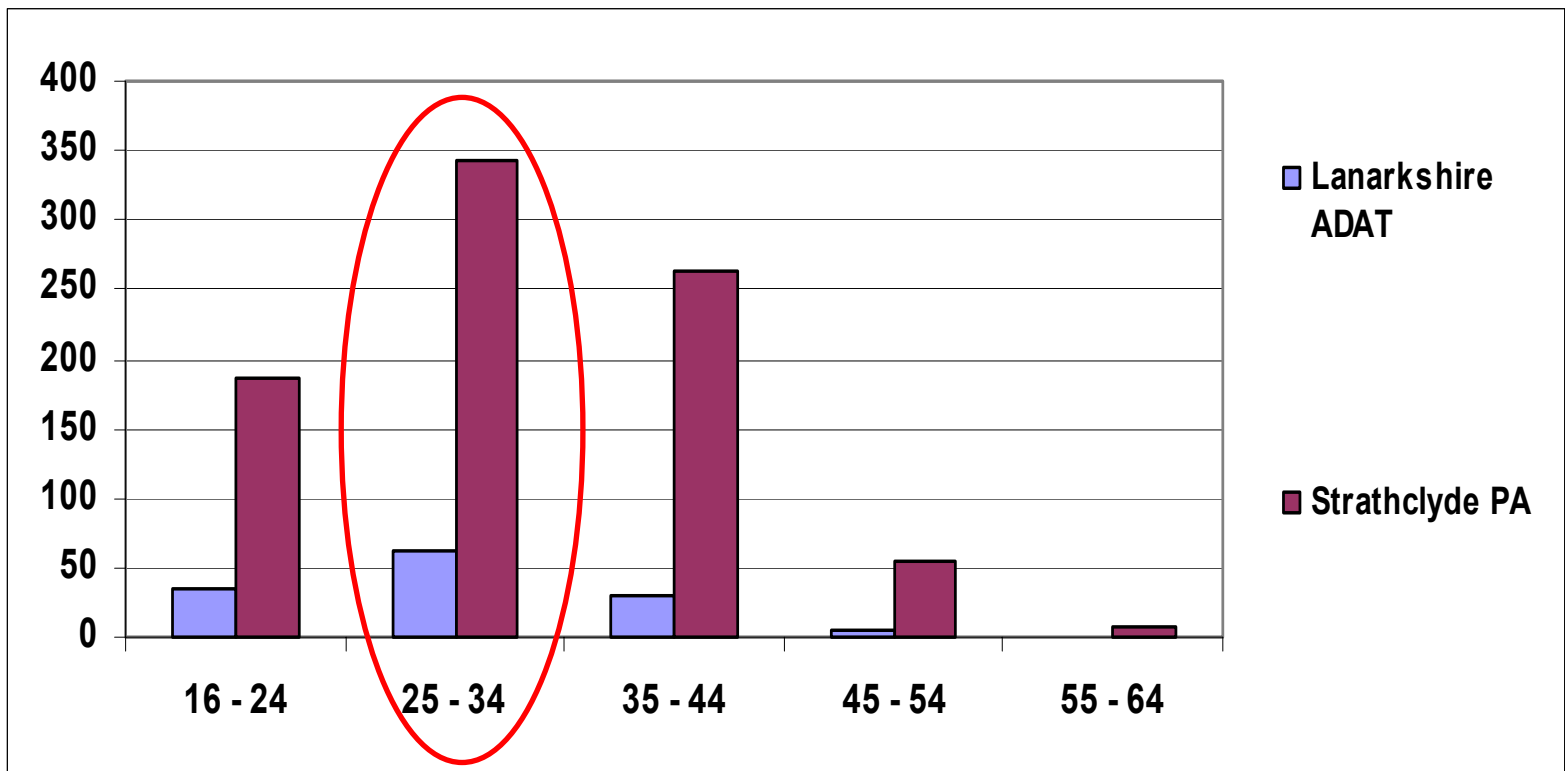
Lanarkshire DRD: Gender



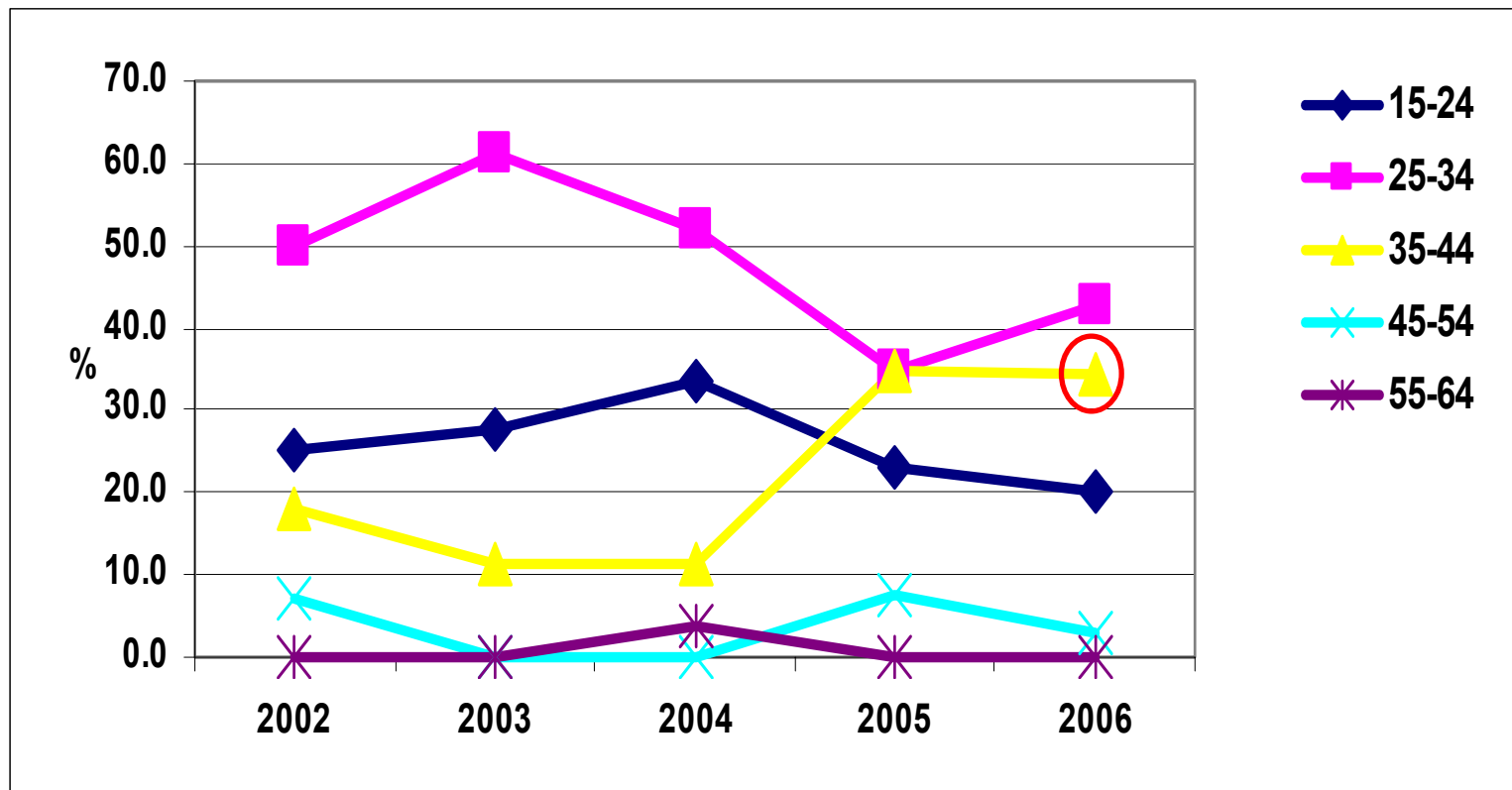
Lanarkshire Female PDUs prevalence: 0.71

Scotland Female PDUs prevalence: 1.10

Lanarkshire DRD: Age-Group

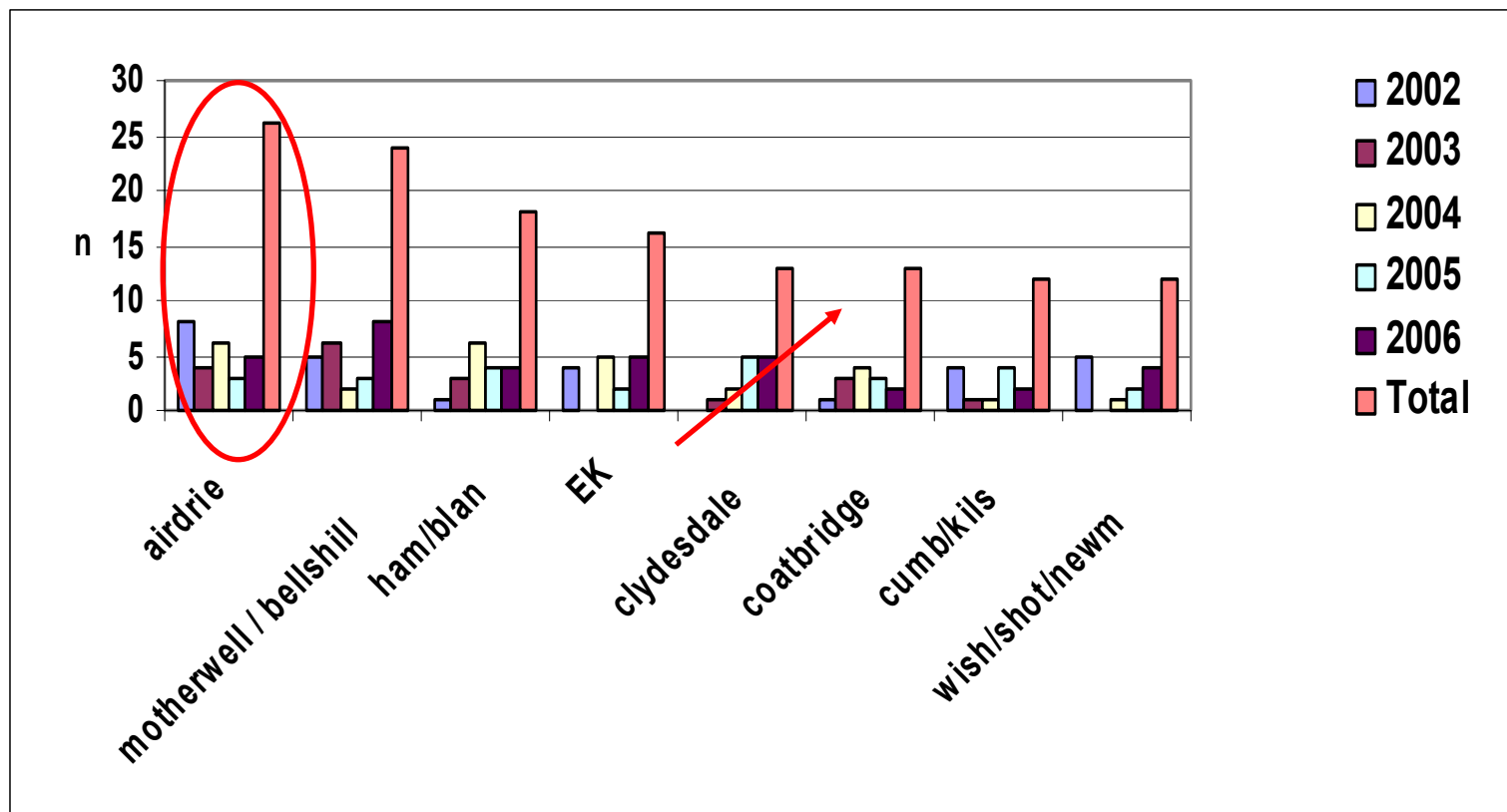


Lanarkshire DRD: Age-Group



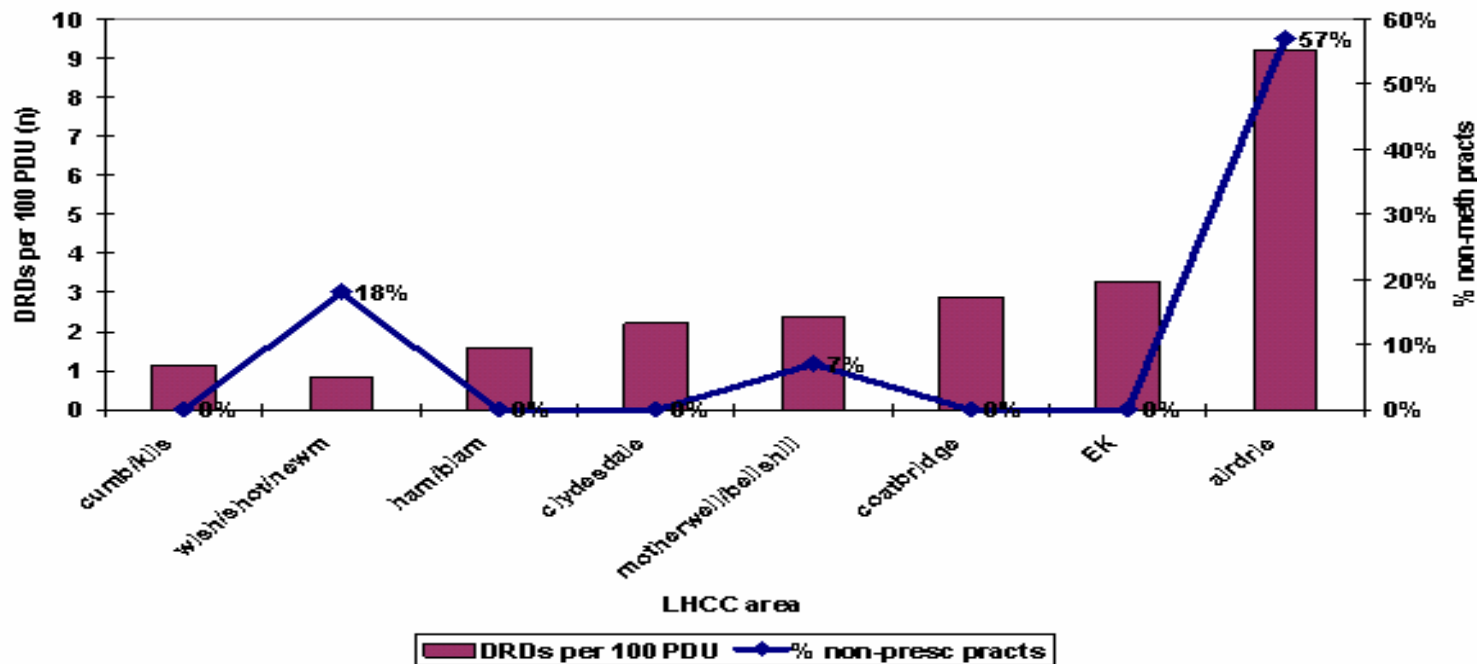
Ave (mean) age up from 30 (2002) to 33 (2006)

Lanarkshire DRD: Geography



Lanarkshire DRD: Methadone (Pre-2005)

No. of DRDs (2001-05 (Jan-Jun)) per 100 PDUs vs proportion of non-methadone prescribing practices; by LHCC area



Lanarkshire DRD: Methadone (Post-2005)

	Locality	GPwSI	Specialist Pharmacist	Methadone Prescribing Pharmacy's	Total
1st	Airdrie	2		8	10
6th	Coatbridge	2		8	10
2nd	Bellshill	2		9	11
7th	Cumb/Kilsyth	3		10	13
2nd	Motherwell	6		9	15
8th	Wishaw	5		10	15
4th	EK	4	3	11	18
5th	Clydesdale	7		12	19
3rd	Hamilton	4	1	19	24



Lanarkshire DRD: Treatment Demand (SMR24)

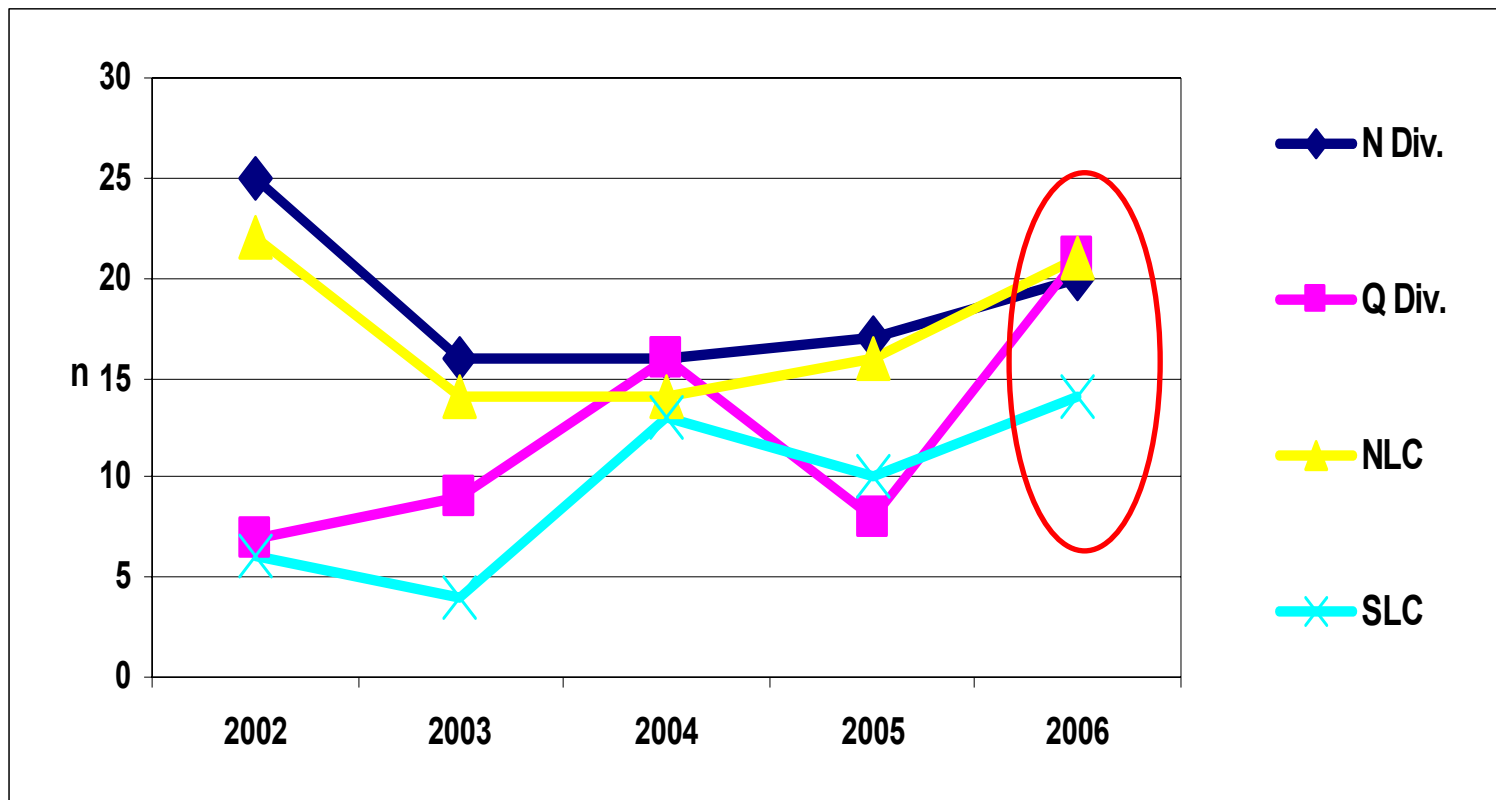
	Year of Presentation					TOTAL
	2001/02	2002/03	2003/04	2004/05	2005/06	
Episodes						
HAMILTON	94	71	77	211	142	595
MOTHERWELL	54	39	75	242	94	504
AIRDRIE	64	52	66	155	107	444
COATBRIDGE	63	20	61	189	94	427
CLYDESDALE	12	28	31	93	97	261
<i>Lanarkshire</i>	<i>607</i>	<i>452</i>	<i>616</i>	<i>1799</i>	<i>996</i>	<i>4470</i>
Clients						
HAMILTON	79	65	74	200	125	543
MOTHERWELL	54	37	73	219	89	472
AIRDRIE	61	51	60	134	99	405
COATBRIDGE	59	19	59	183	85	405
CLYDESDALE	12	27	29	82	88	238
<i>Lanarkshire</i>	<i>565</i>	<i>420</i>	<i>579</i>	<i>1 623</i>	<i>908</i>	<i>2472</i>



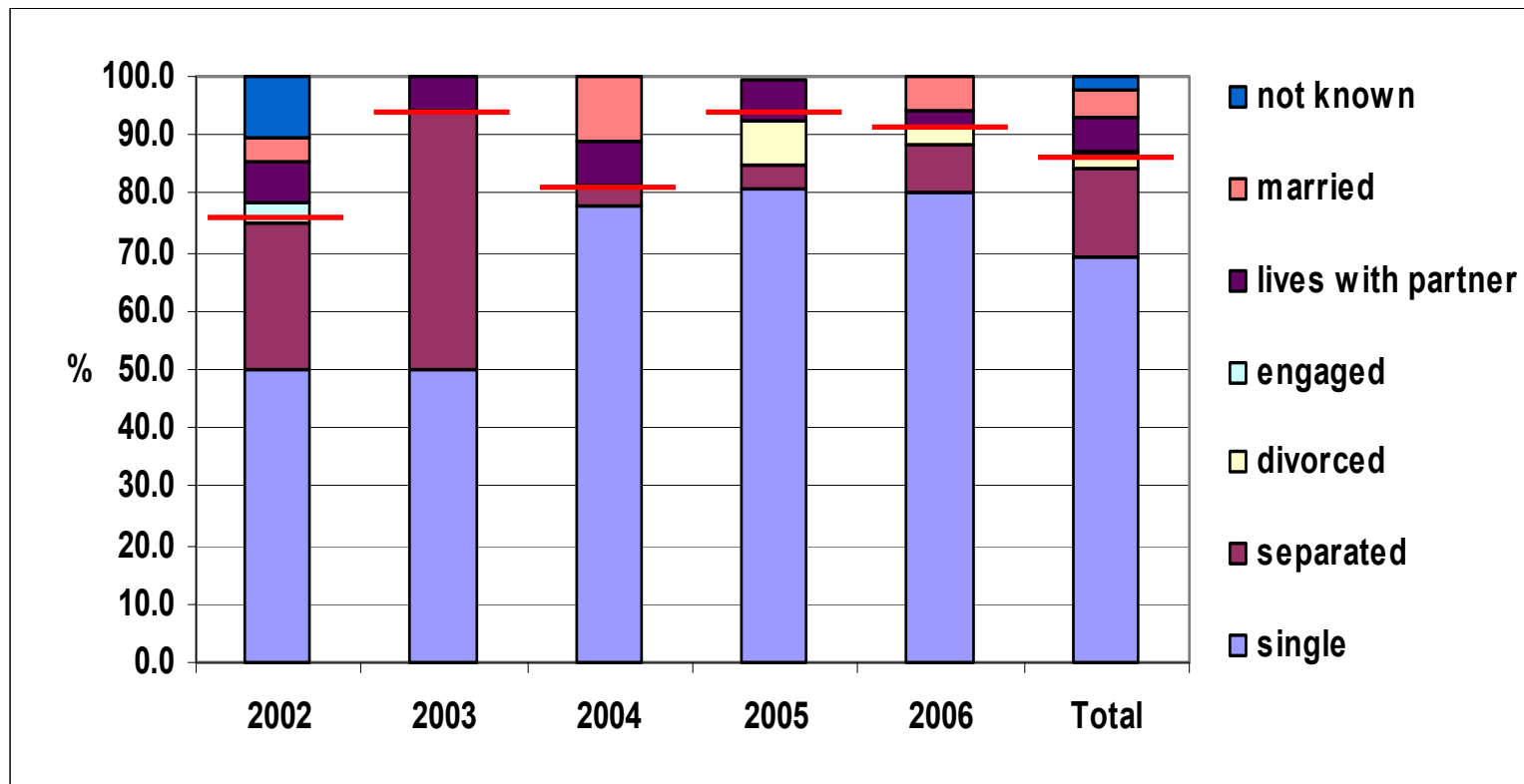
Lanarkshire DRD: Treatment Demand (SMR24)

- Across Lanarkshire reported opiate use down from 86% (2001/02) to 64% (2005/06)
- Clydesdale reported opiate use in 2005/06 was 83%
- Across Lanarkshire no. of people reporting injecting drug use fell from 57% (2001/02) to 48% (2005/06)
- In Clydesdale, over half (69%) of all clients in 2005/06 reported injecting at some point in the past.

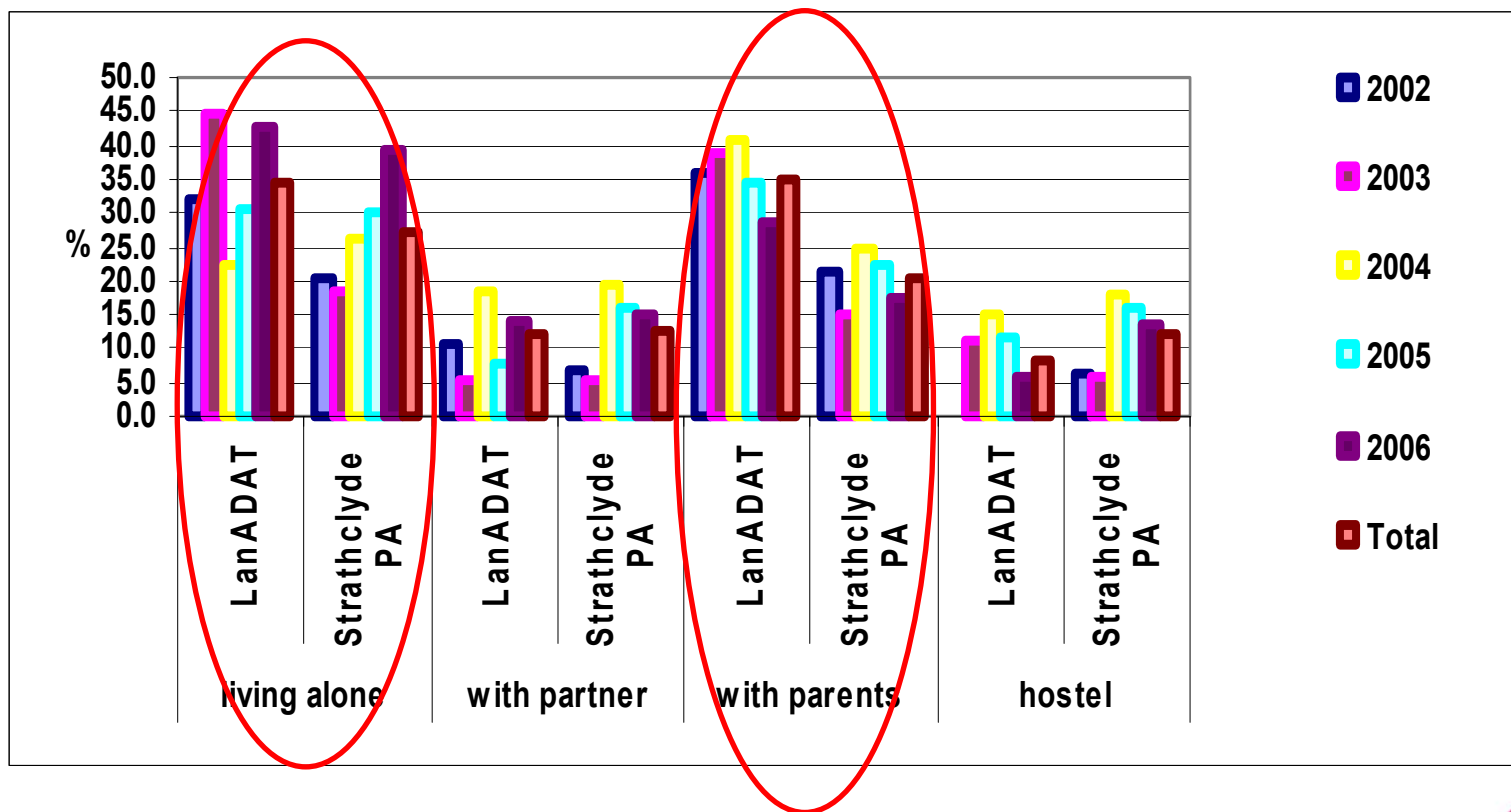
Lanarkshire DRD: Region



Lanarkshire DRD: Marital Status



Lanarkshire DRD: Living Status

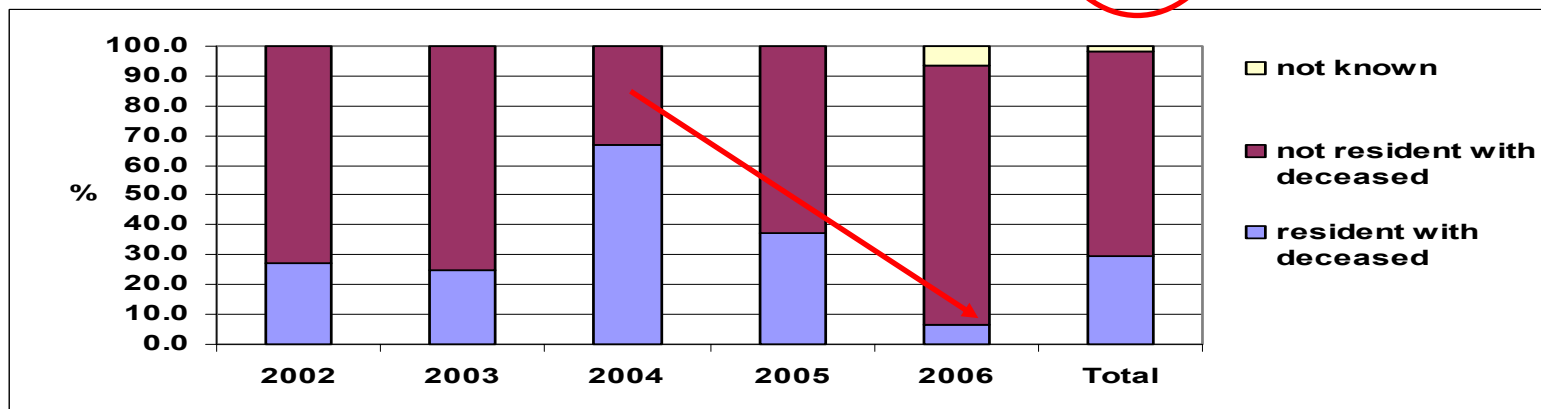
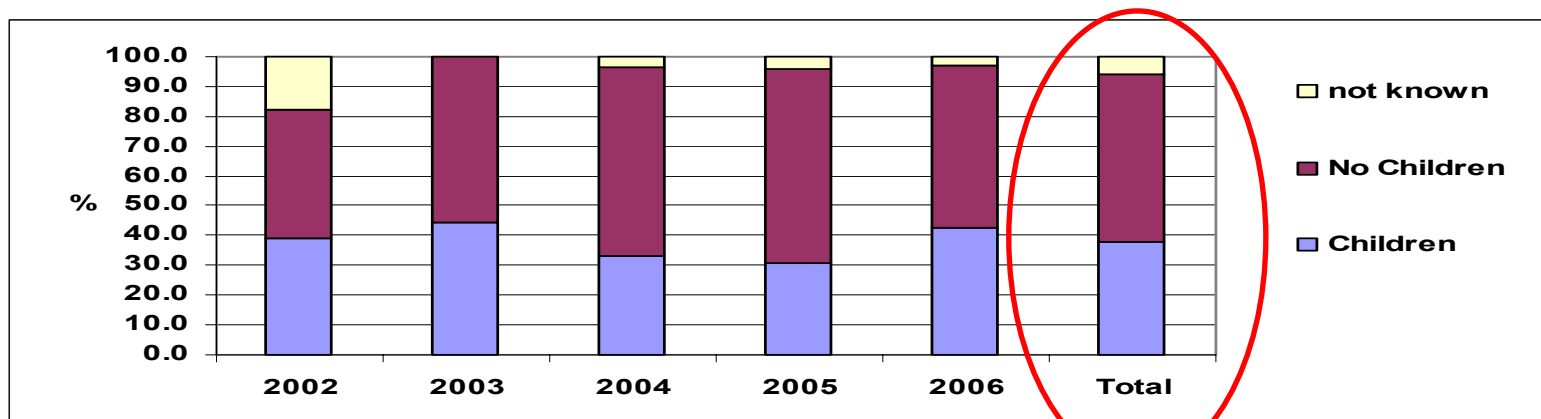


% of 1 person households (total population):

15.63% (North Lanarkshire)

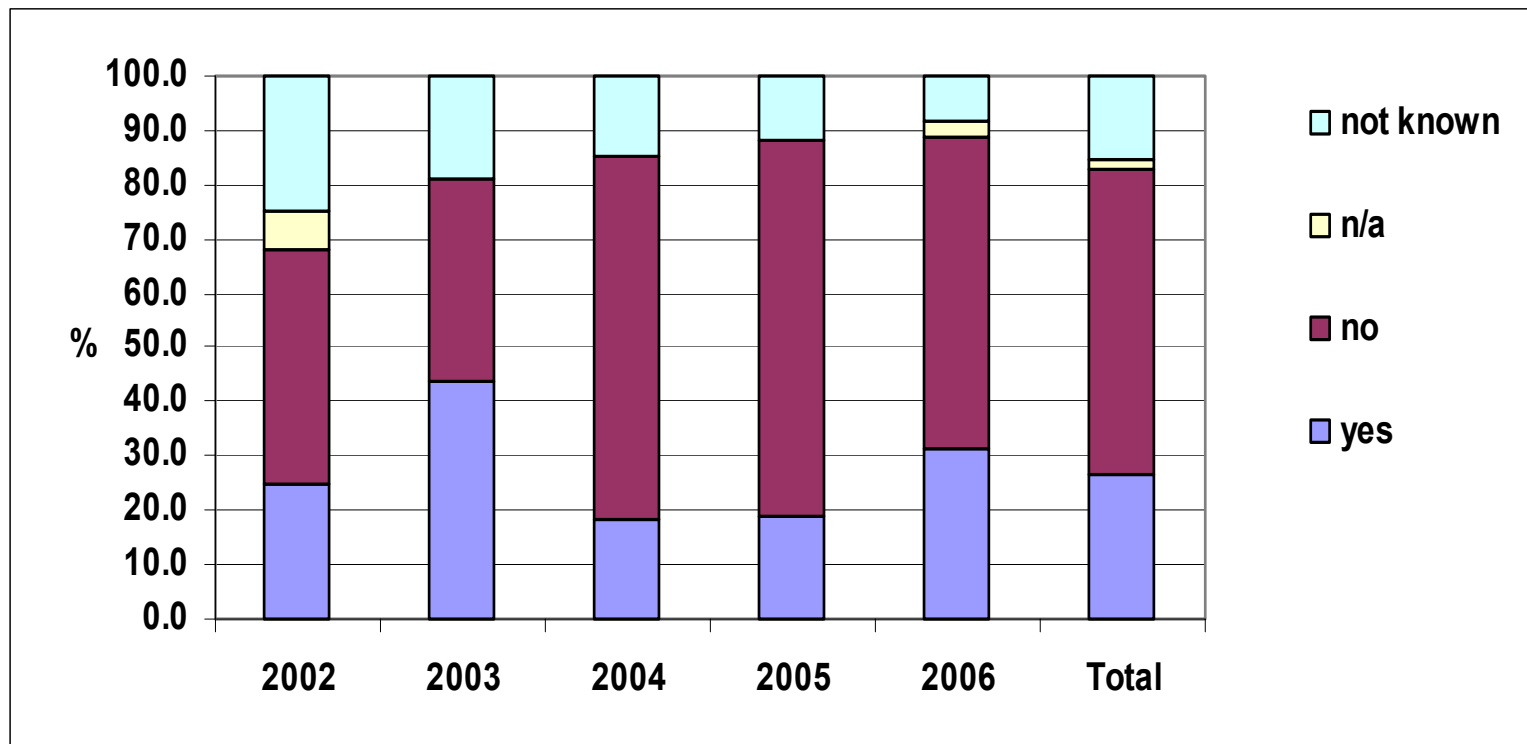
15.55% (South Lanarkshire)

Lanarkshire DRD: Children

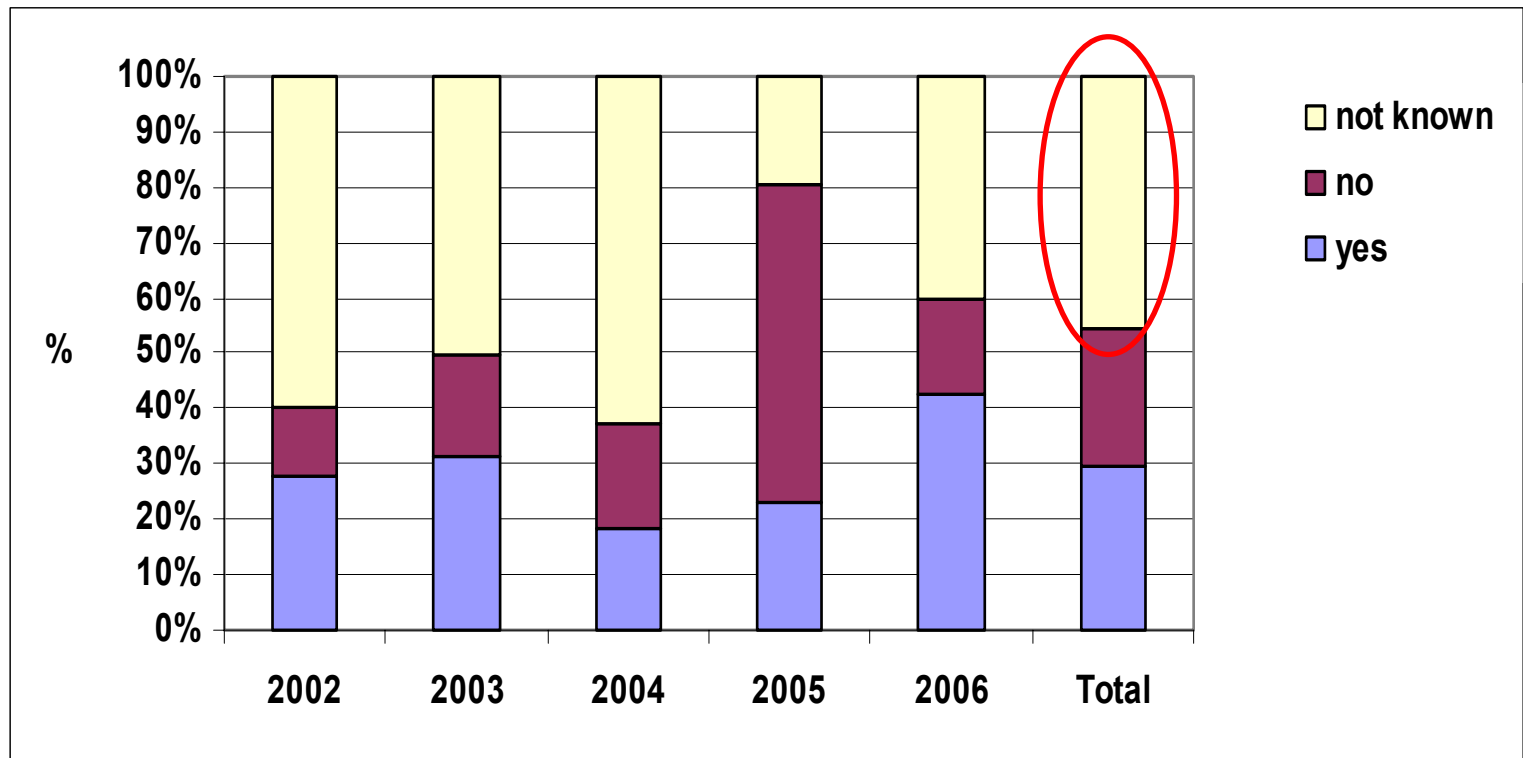


Ave (mean) no. of children affected by DRD of parent = 1

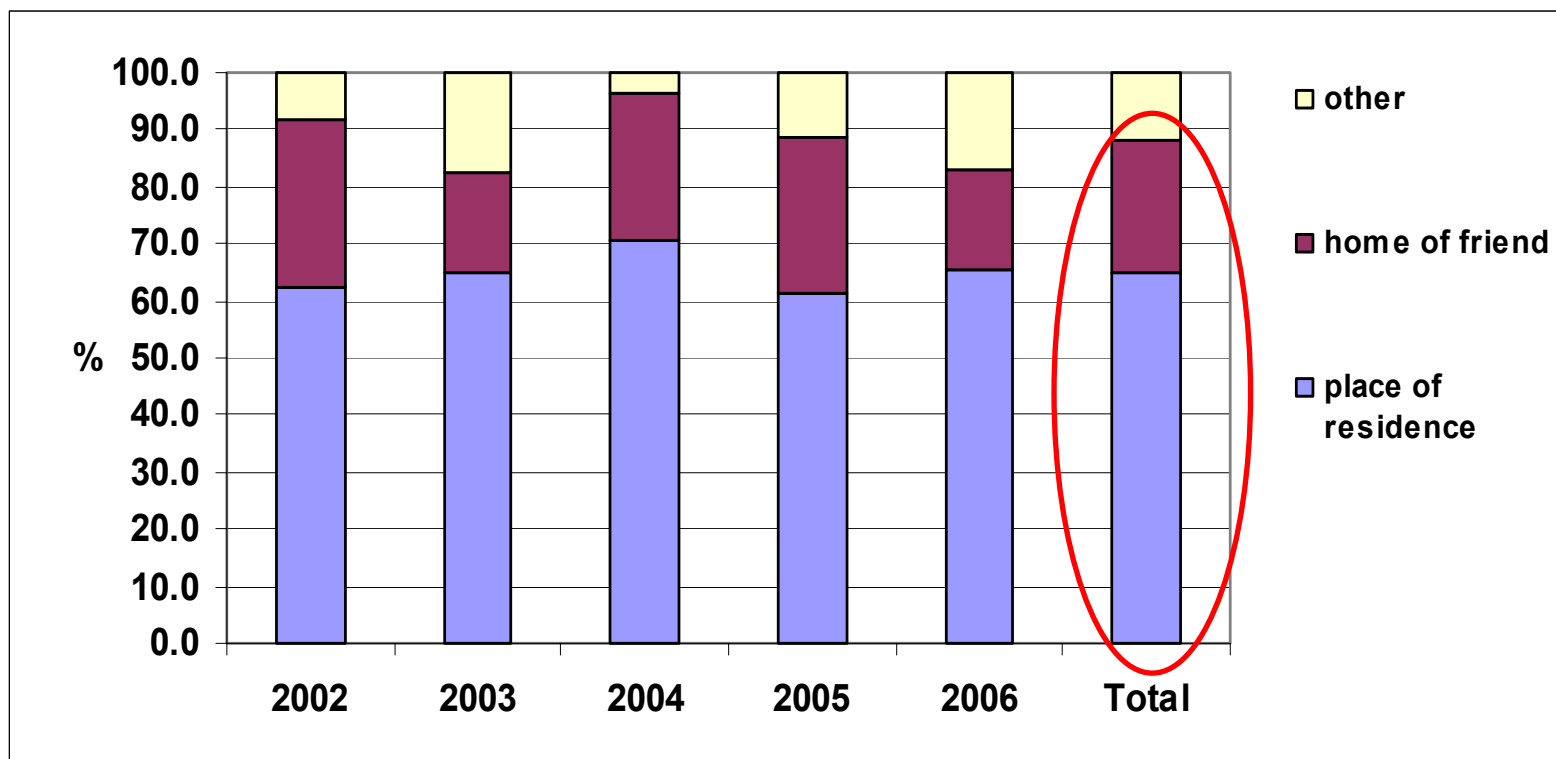
Lanarkshire DRD: Recent Relationship Breakdown



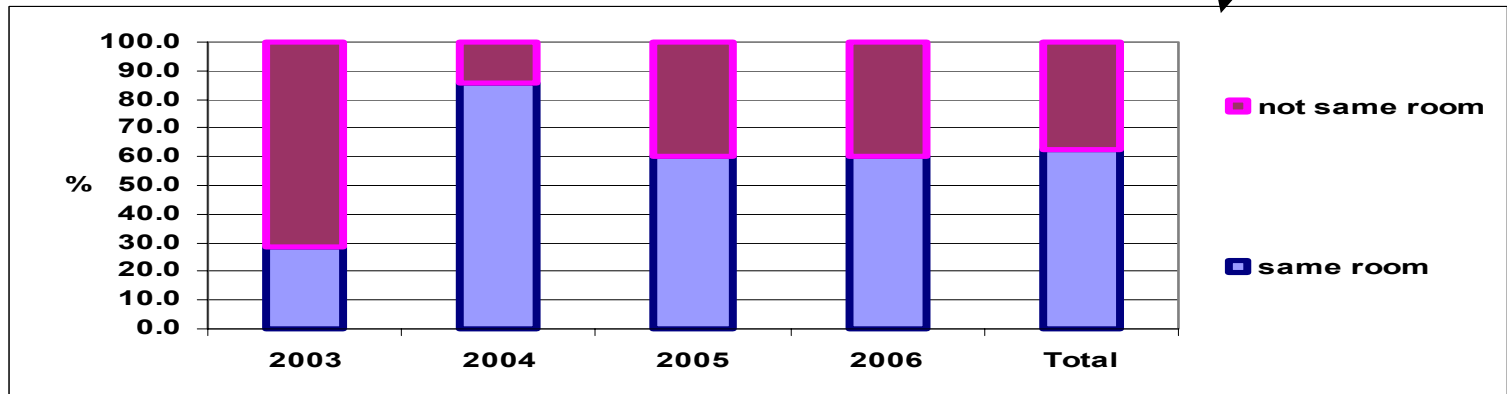
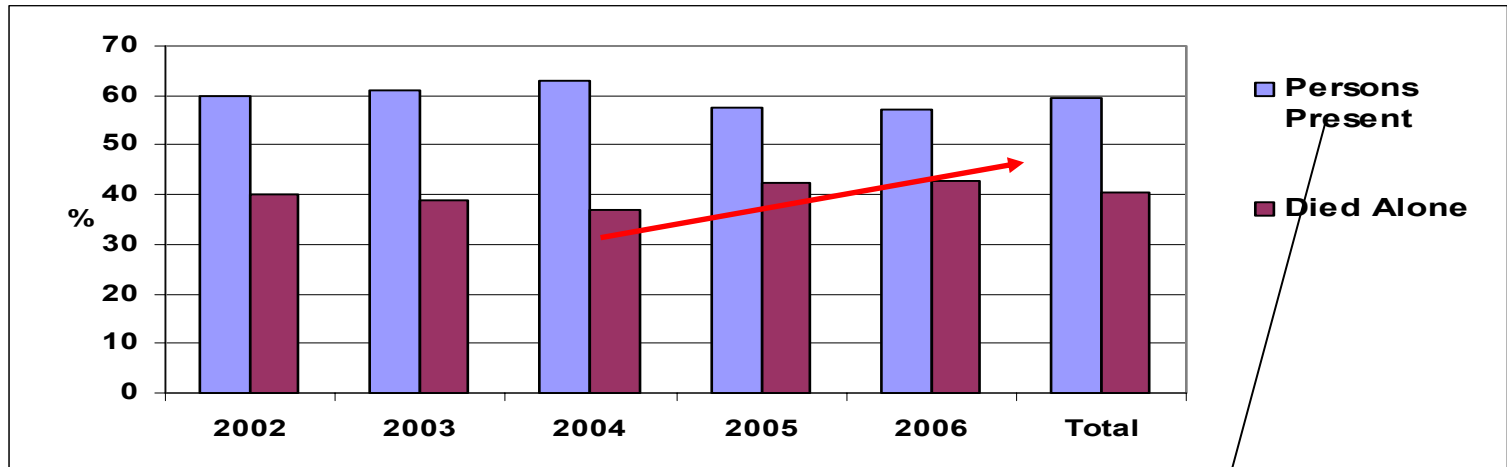
Lanarkshire DRD: Known Mental Health History



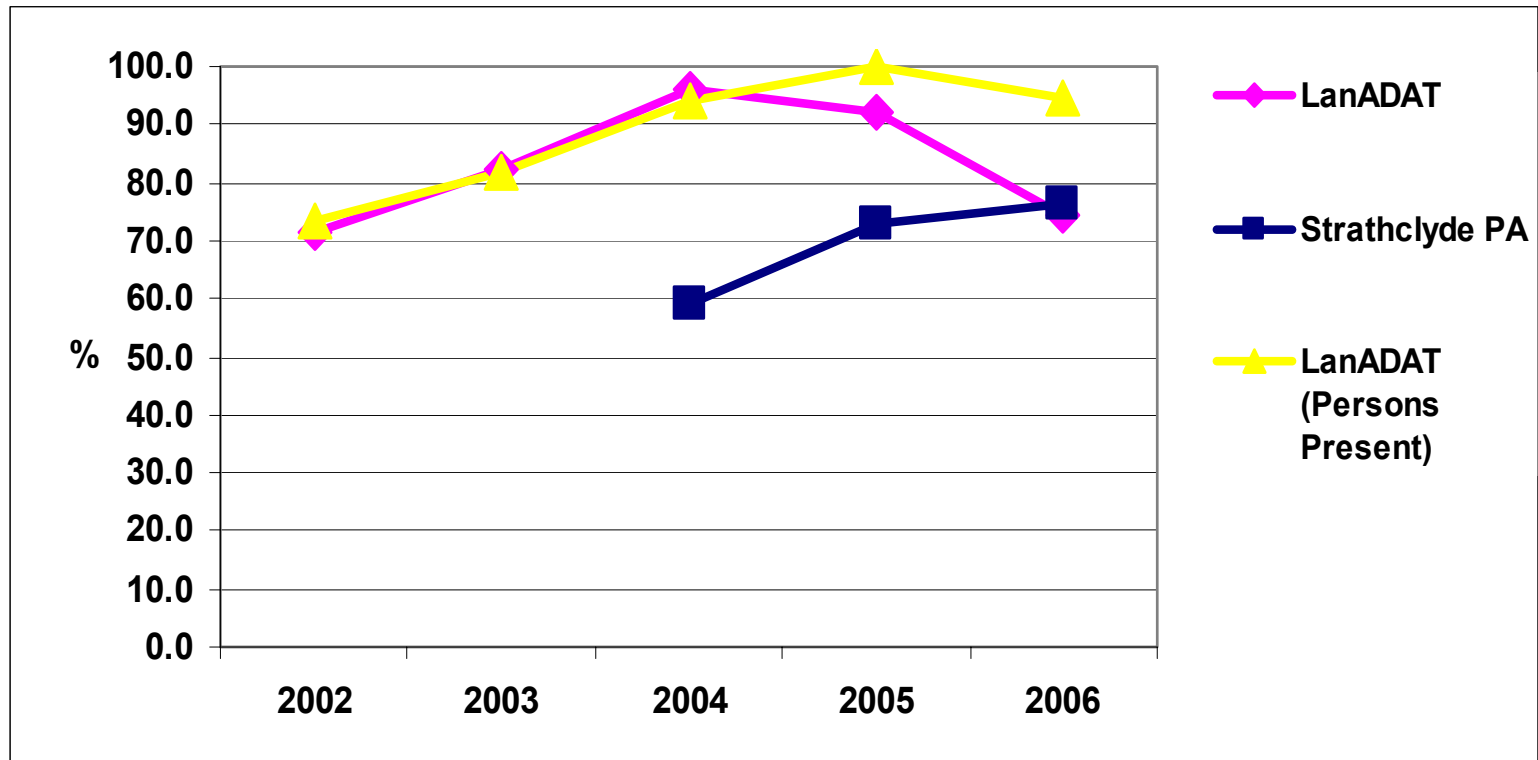
Lanarkshire DRD: Where Found



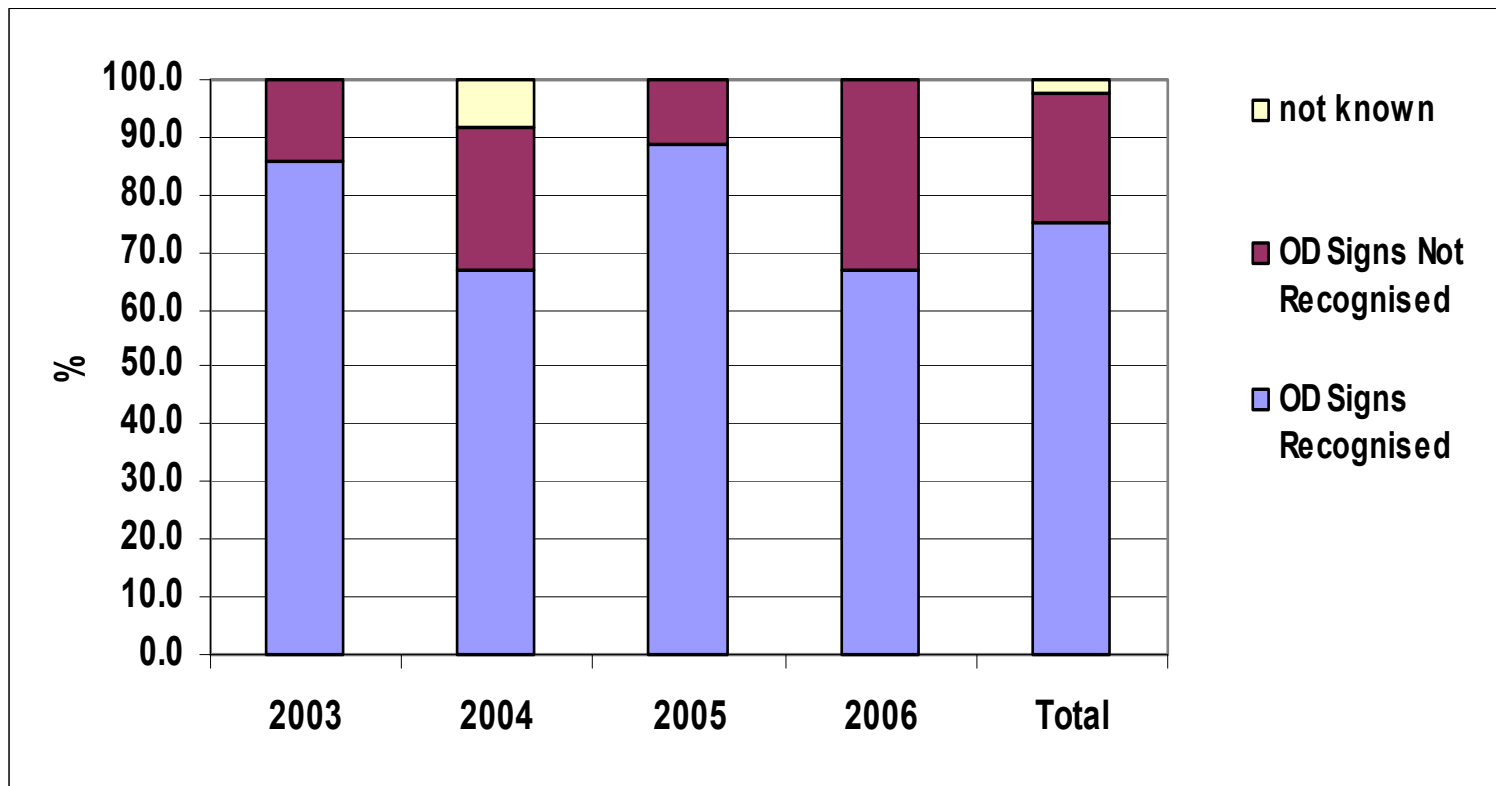
Lanarkshire DRD: Persons Present



Lanarkshire DRD: Ambulance Attendance

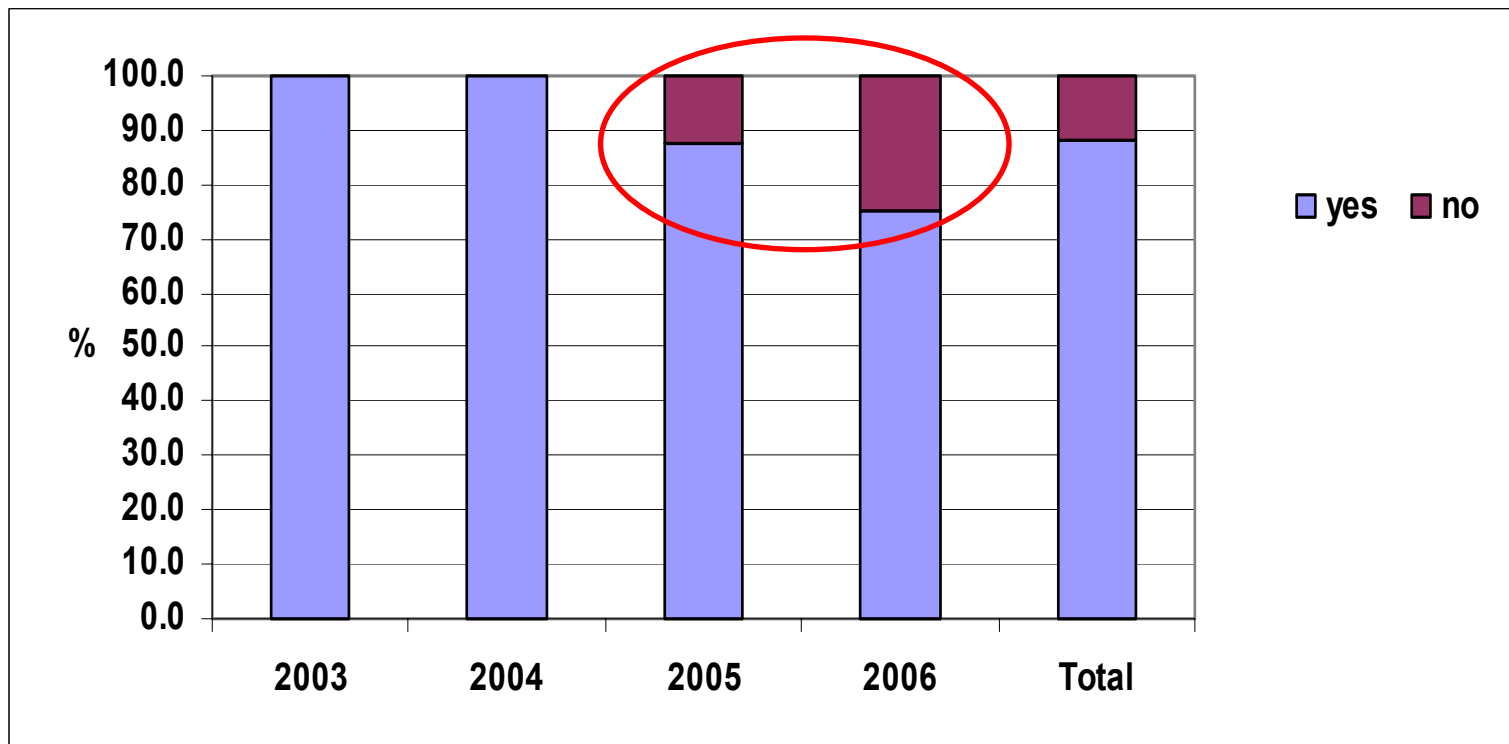


Lanarkshire DRD: Persons Present Actions



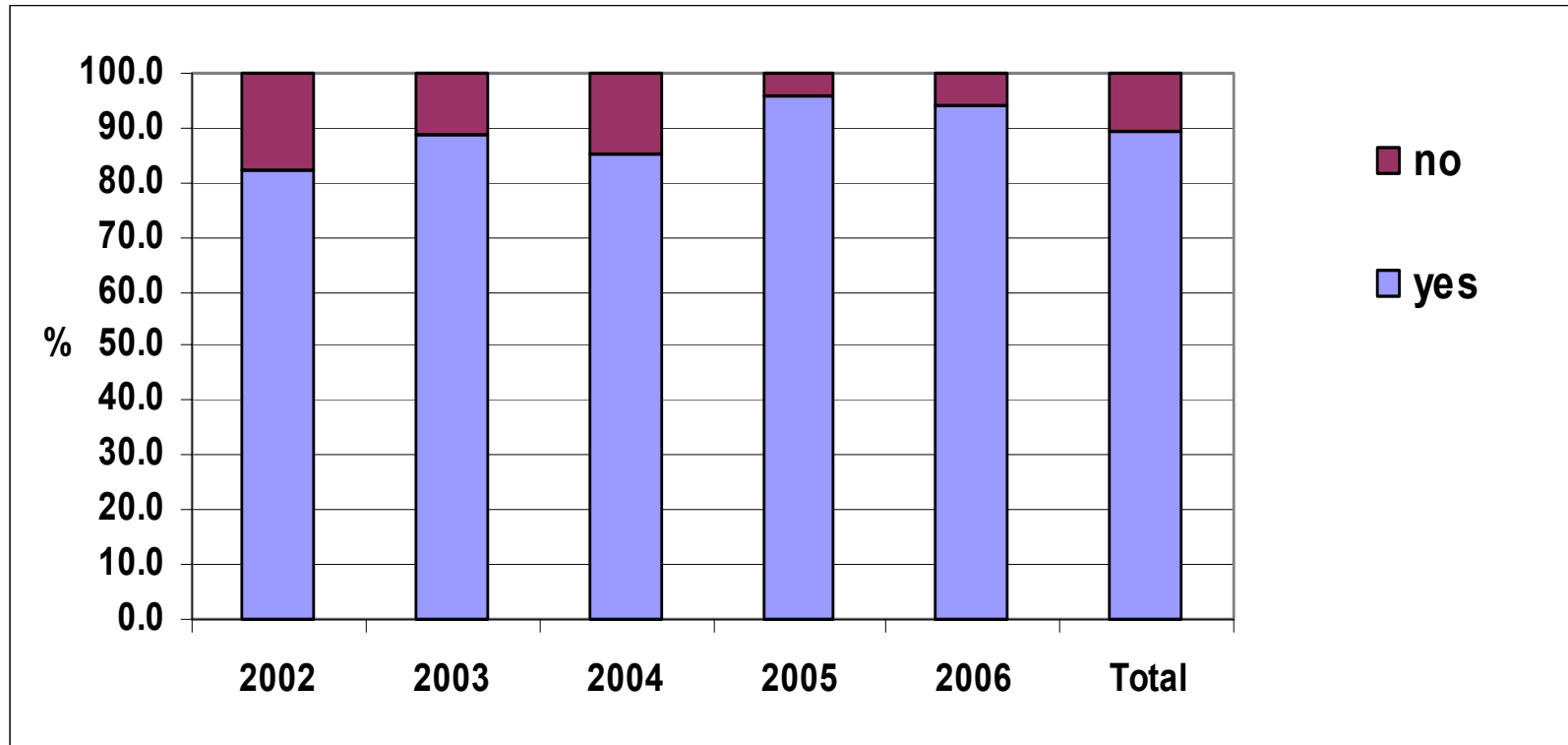
Lanarkshire DRD: Resus Attempted

(where persons present & OD signs recognised)

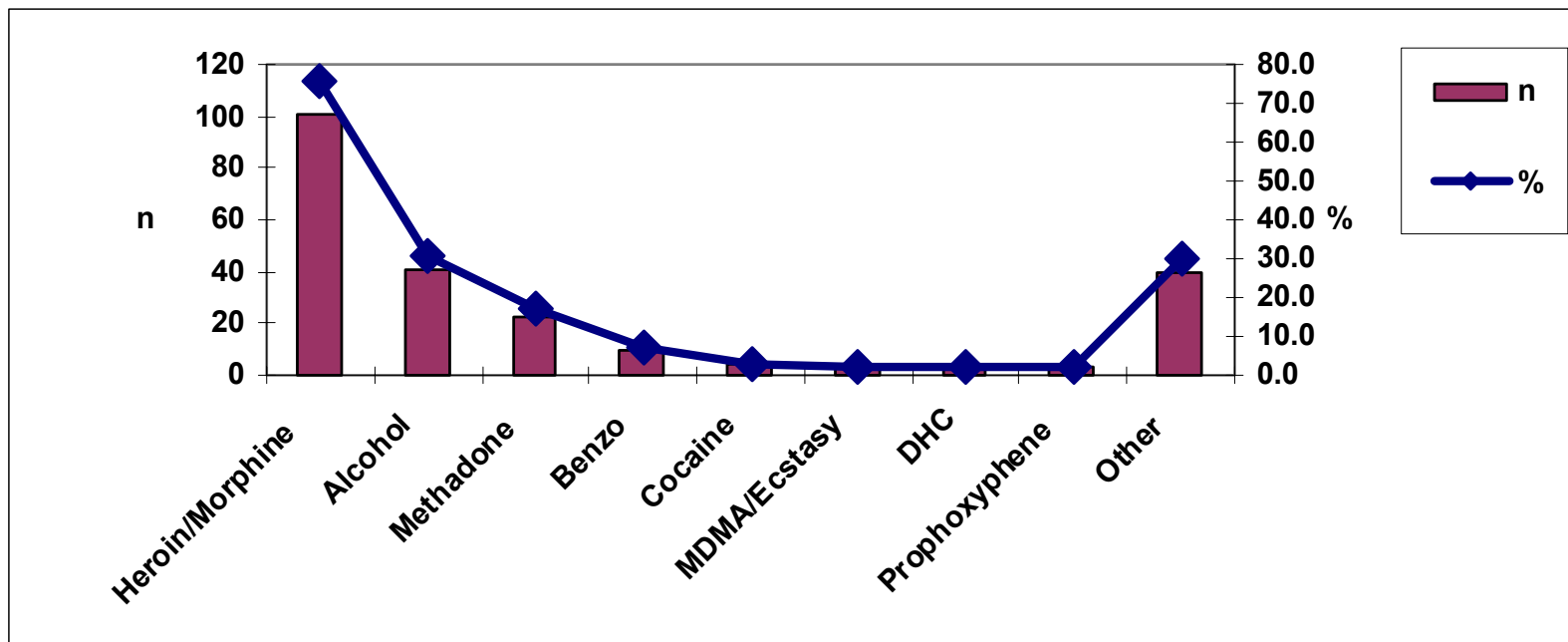


61% of attempted resuscitations involved witnesses

Lanarkshire DRD: Opiate Involvement



Lanarkshire DRD: Toxicology



1 drug involved: n=134 (100%)

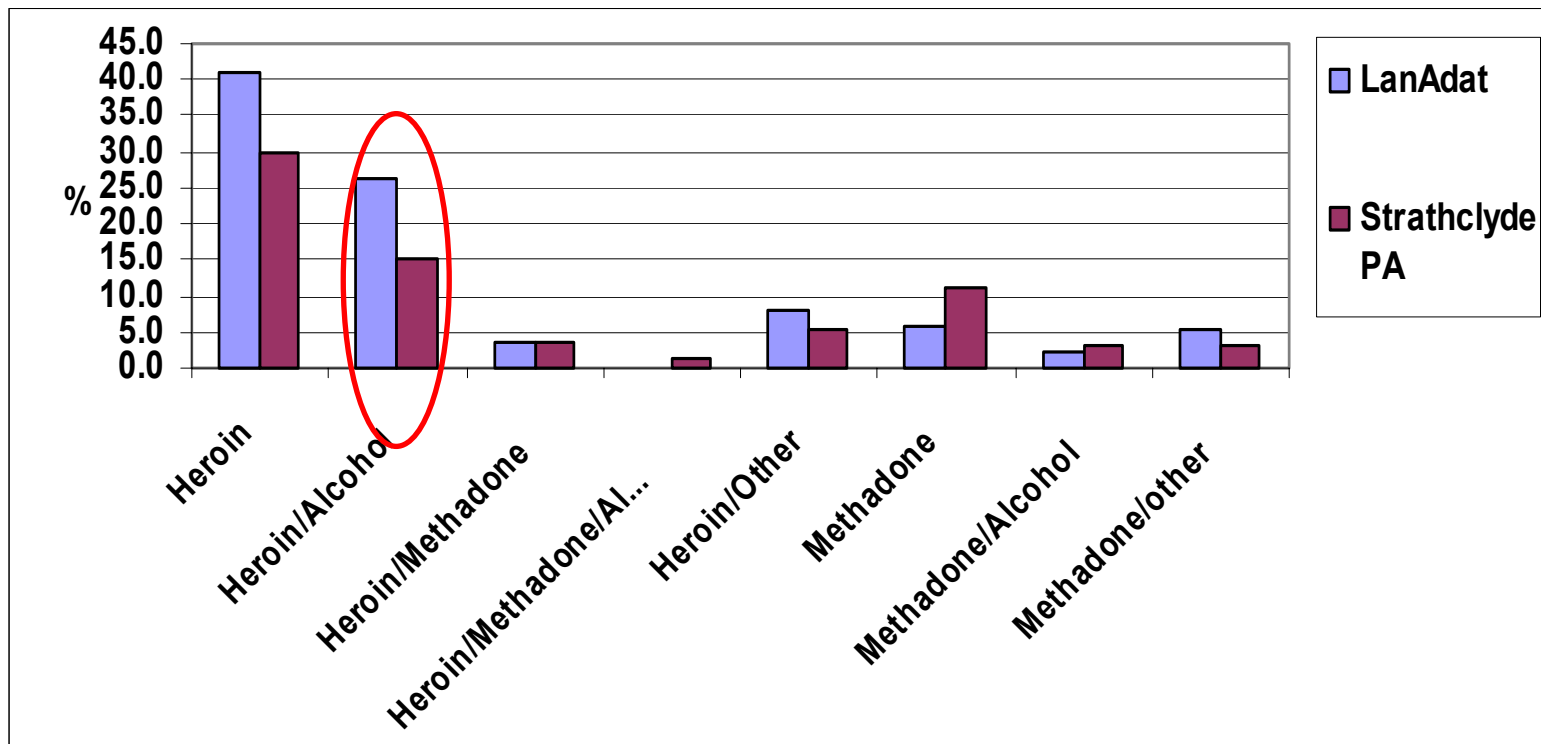
2 drugs involved: n=71 (53%)

3 drugs involved: n=8 (6%)

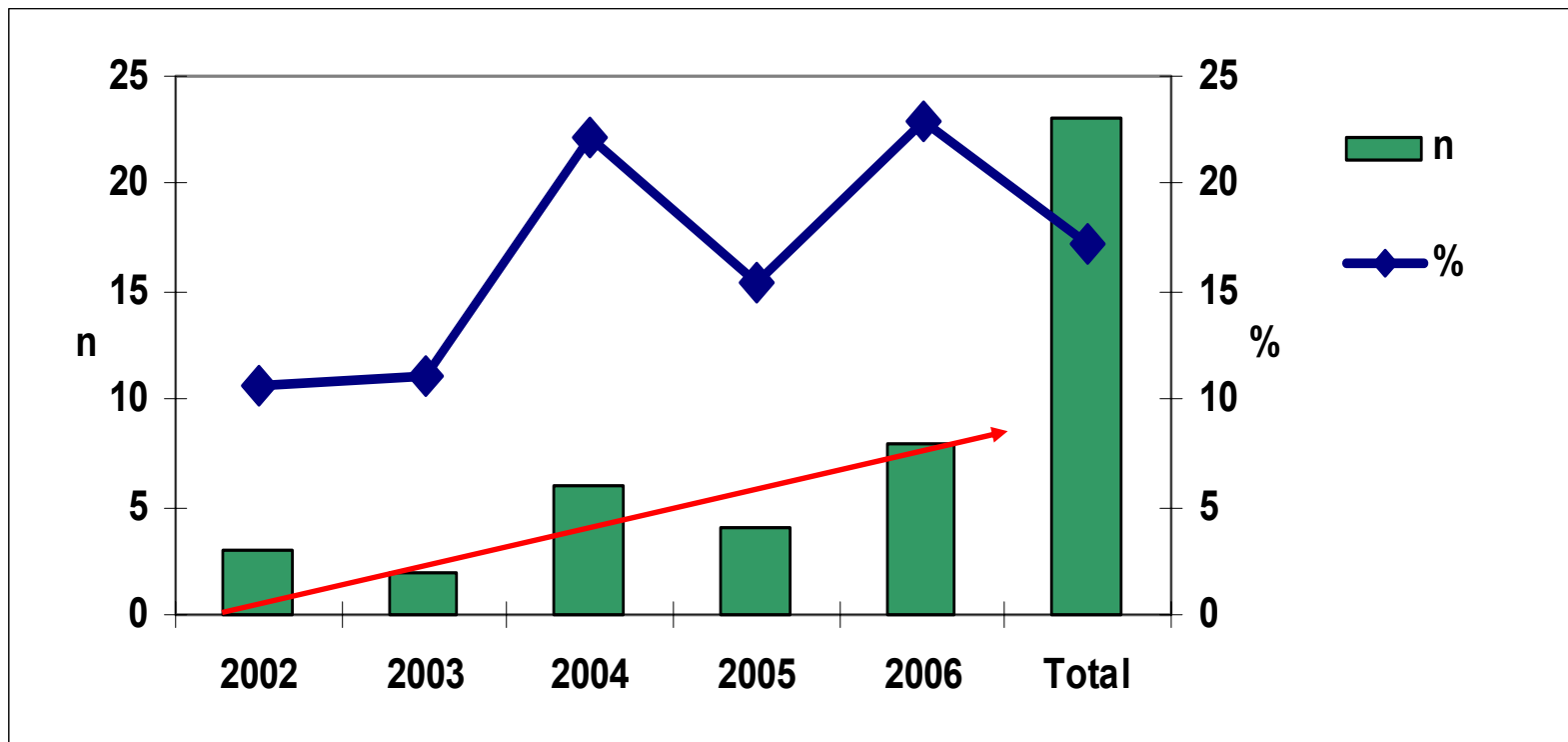
	South (%)	North (%)
heroin/morphine intoxication	76.6	75.9
alcohol intoxication	29.8	31.0
methadone intoxication	21.3	14.9
benzo intoxication	8.5	6.9



Lanarkshire DRD: Toxicology Combinations

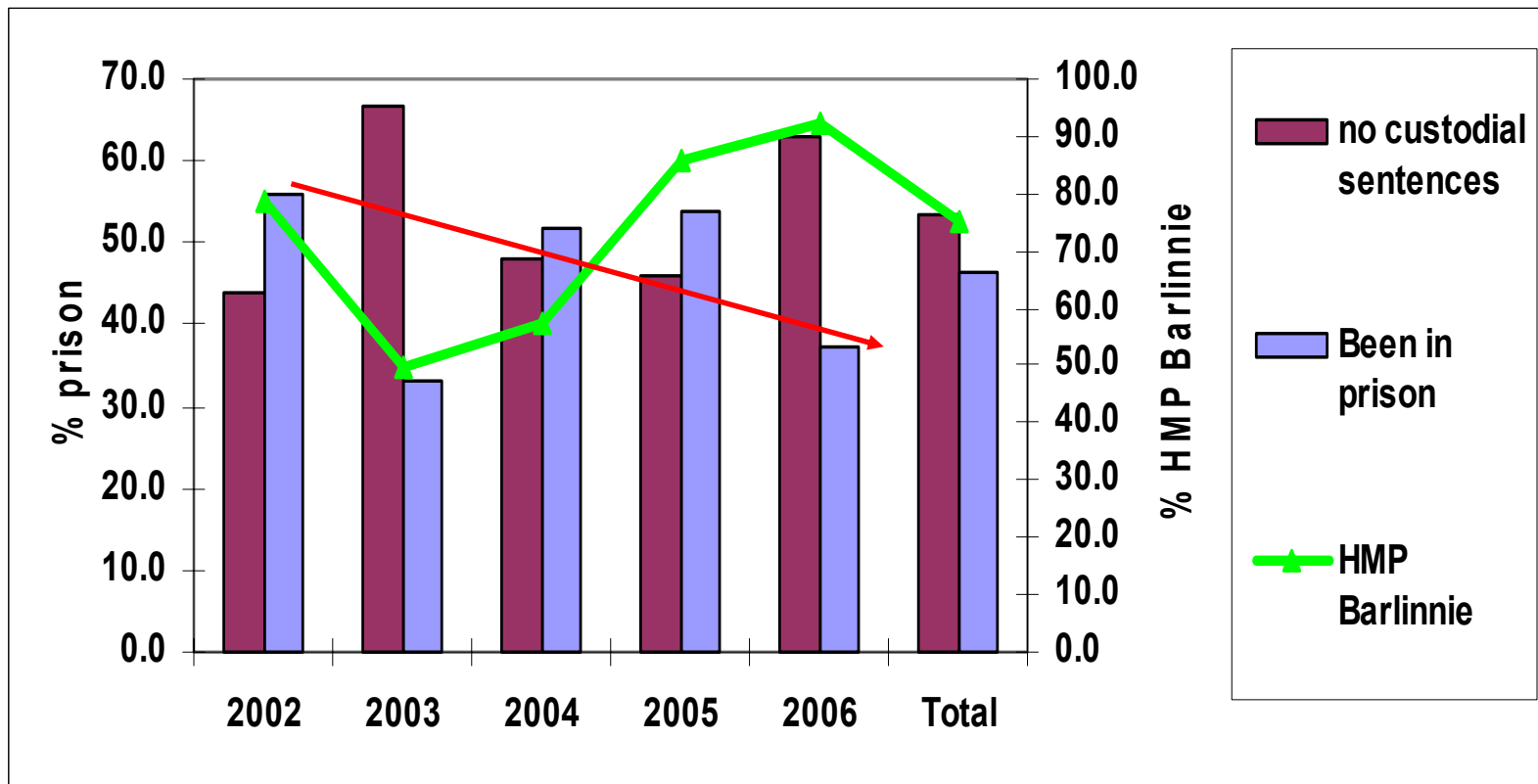


Lanarkshire DRD: Methadone Involvement

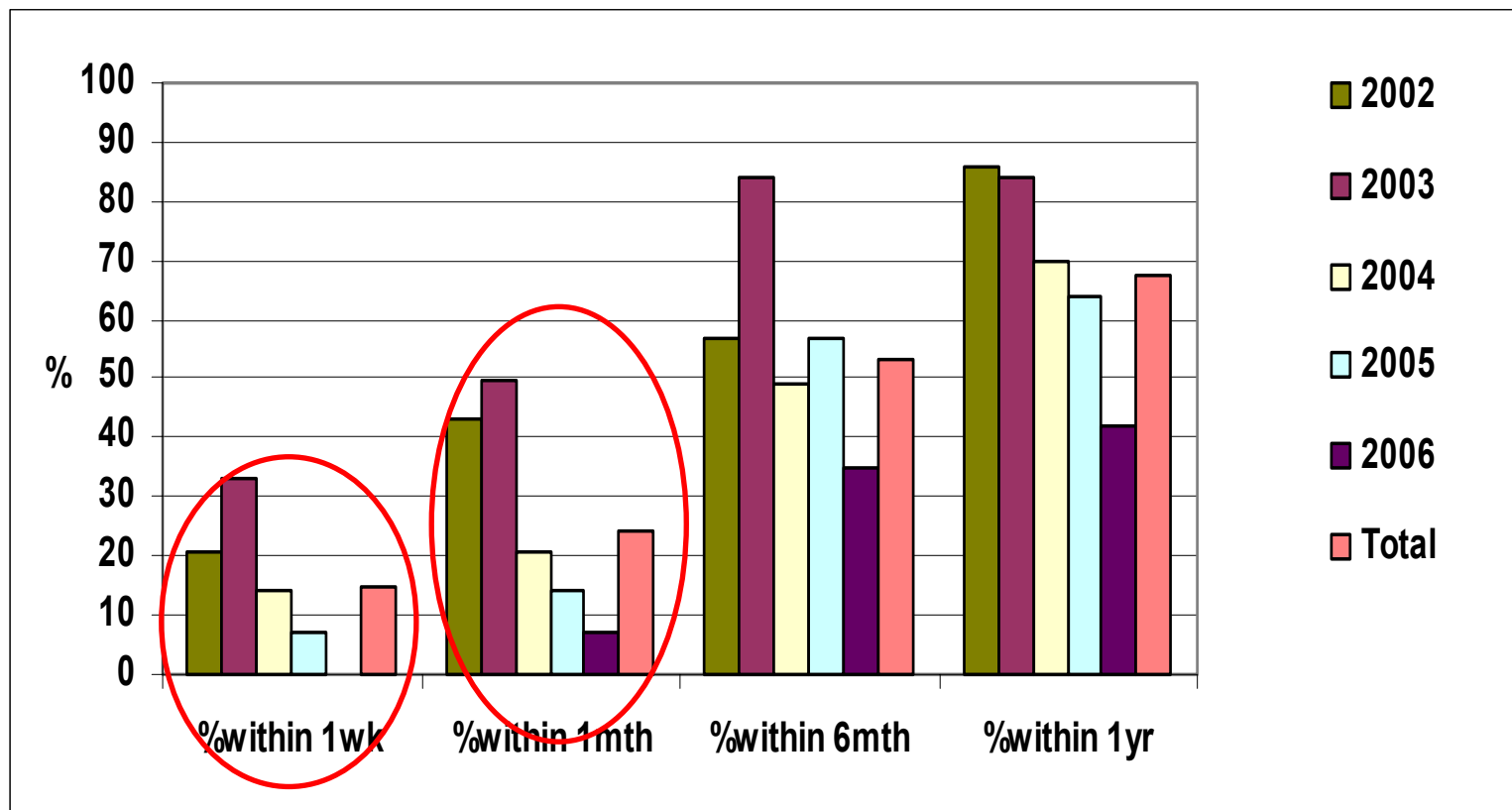


Number of local Methadone clients \uparrow 52% between 2002 & 2006

Lanarkshire DRD: Prison



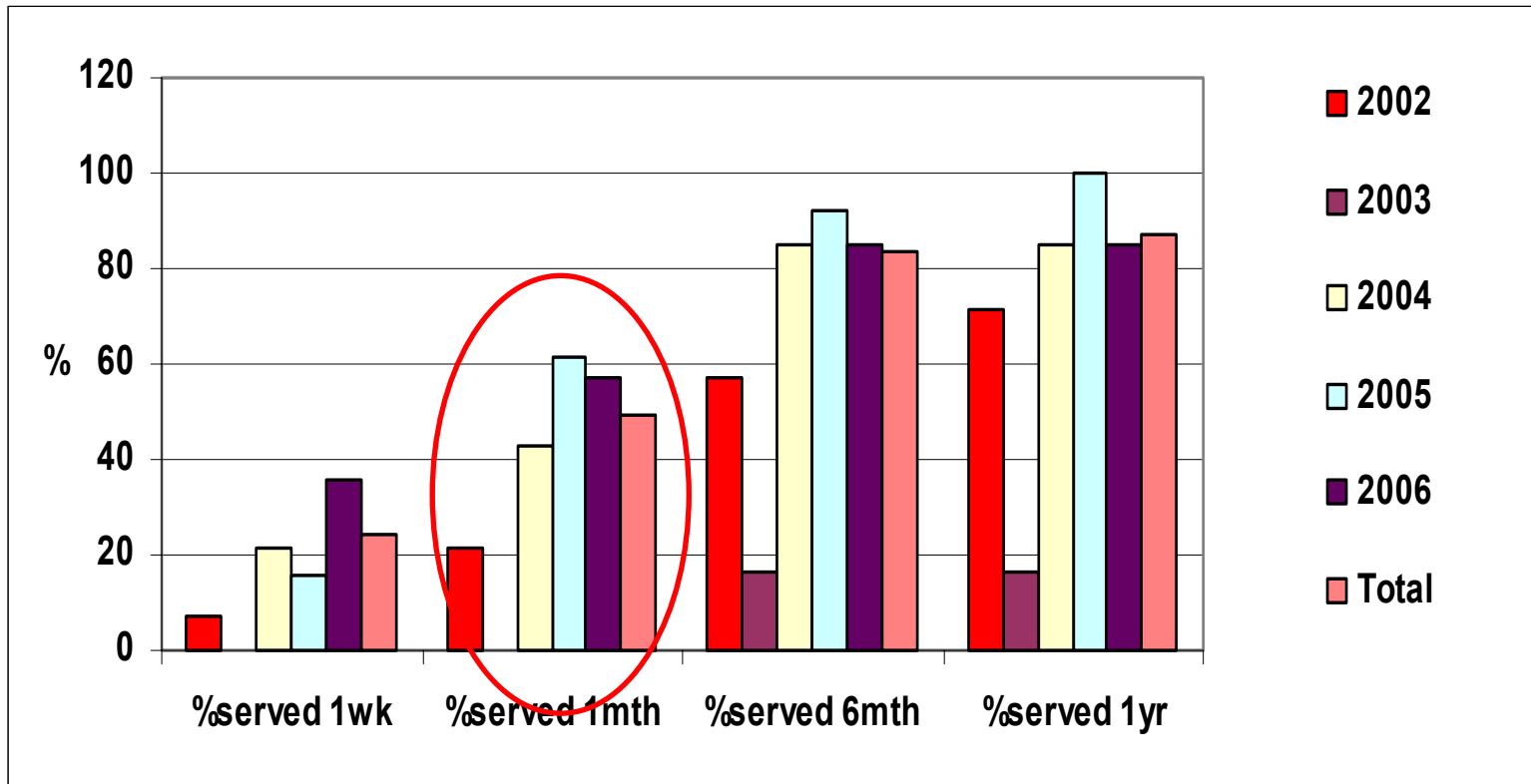
Lanarkshire DRD: Time at Liberation



Time Period	Within 1 Week	Within 1 month	Within 6 months	within 1 year	Total
Number	10	15	34	44	64
%	15	24	53	68	100



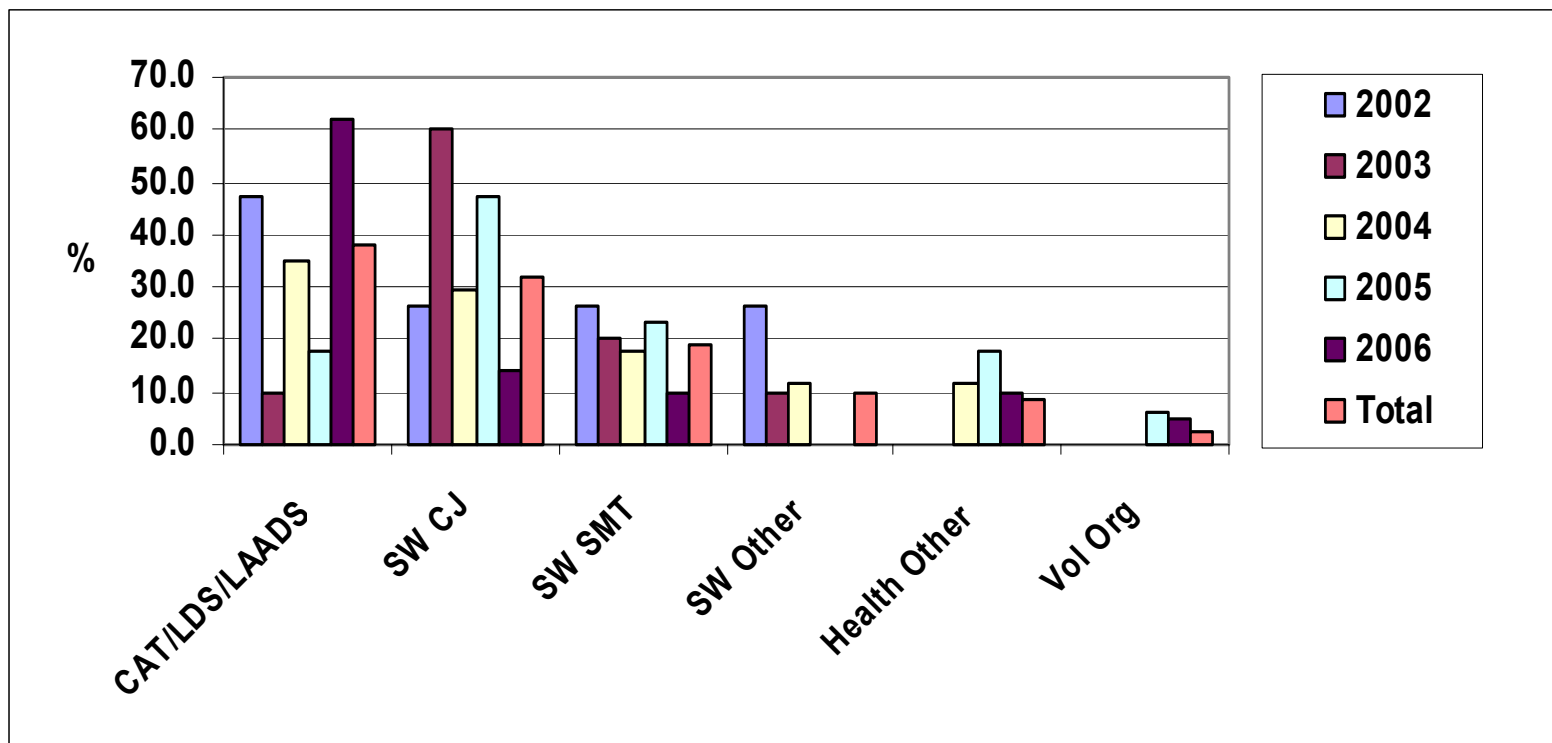
Lanarkshire DRD: Length of Sentence



Time Period	Within 1 Week	Within 1 month	Within 6 months	within 1 year	Total
Number	16	31	54	56	64
%	25	49	84	87	100



Lanarkshire DRD: Service Contact



No. of drug users in contact with local services ↑ 61% between 2002 & 2006

DRDs in South more likely (74%) to be known to services than those in the North (56%)

Lanarkshire DRD: Summary

- Aging DRD population
- LHCC / Locality
- Relationship Factors / Personal Circumstance
- Education & Training
- Naloxone
- Methadone
- Prison
- Data Recording
- Drug Associated Death

